

Production Wizard™

Opening Production Wizard™ and Other Excel Files at the Same Time

From Production Wizard™

Once Production Wizard™ is open. It is possible to open an Excel file in a new instance of Excel.

To start another instance of Excel and open a file:

(Excel 2000 – 2003) Click the **File** menu, select **Open Other Files**, and click **Open an Excel File**.

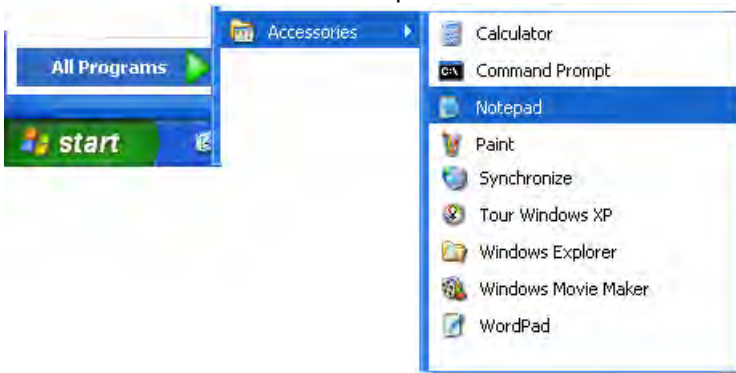
(Excel 2007 or higher) Select the **File** menu and click **Open an Excel File** from the **Open Other Files** group.

Start Production Wizard™ in a New Instance of Excel

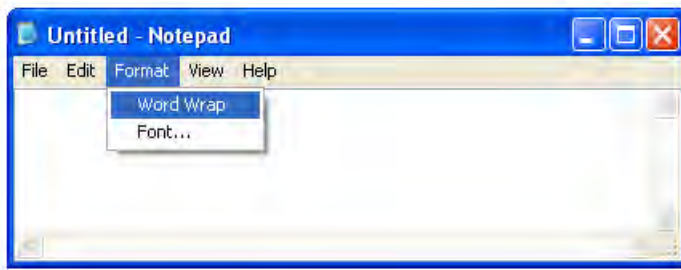
Many times users have other Excel files open when they wish to use Production Wizard™. Using a batch file (.bat) will insure that a new copy of Excel is started each time you open Production Wizard™. You will be able to go back and forth between the various copies without difficulty.

Creating a Batch File:

1. Start a text editor like MS Notepad.

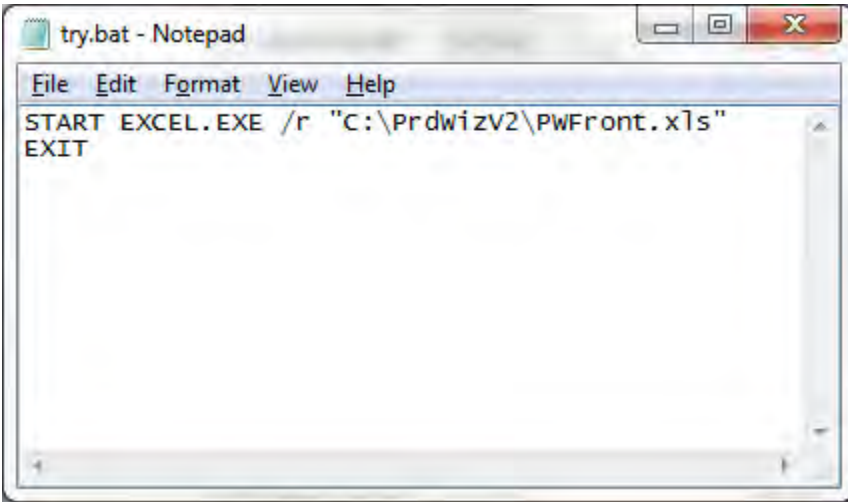


2. If using Notepad, make sure the **Word Wrap** option is unchecked under the **Format** menu.

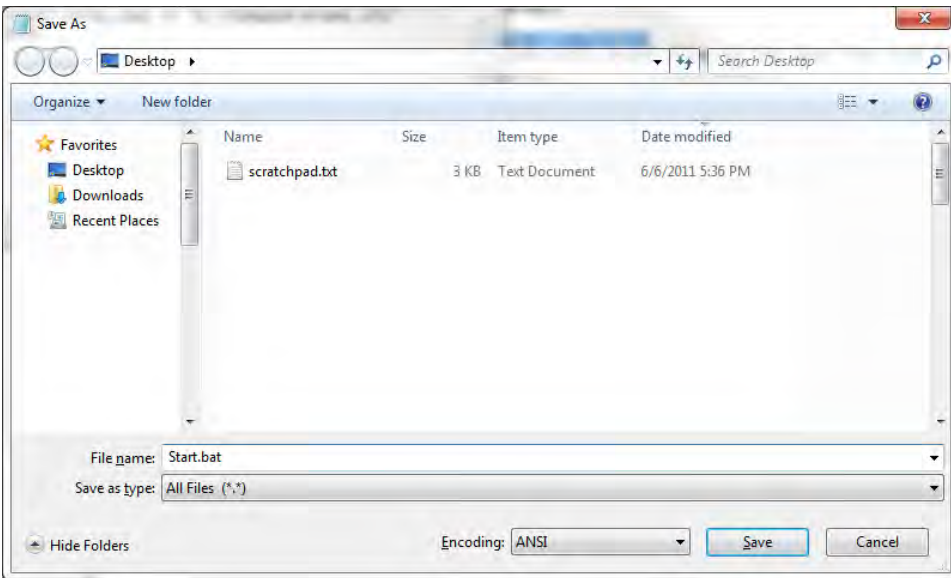


3. Insert the following code in the empty Notepad document.

```
START EXCEL.EXE /r "C:\PrdWizV2\PWFront.xls"  
EXIT
```



- 4. Replace C:\PrdWizV2\PWFront.xls with the location of your Production Wizard™ PWFront.xls file.
- 5. Save the file with the .bat ending instead of .txt.



- 6. If the batch file is not saved to your desktop, create a shortcut to point to the .bat file.