

## Getting Production Wizard™ Started Using Excel 2003

This document covers installing, registering, and starting Production Wizard™ in Excel 2003. If your computer has Microsoft® Excel 2007, please refer to *Getting Production Wizard™ Started Using Excel 2007 or 2010*. Please note that Production Wizard™ is registered **after** installing the program. You must contact Owl Software to receive a registration code.

### System Requirements:

A computer running Microsoft® Windows and Microsoft® Excel 2000 or higher is required.

### Installing Production Wizard™

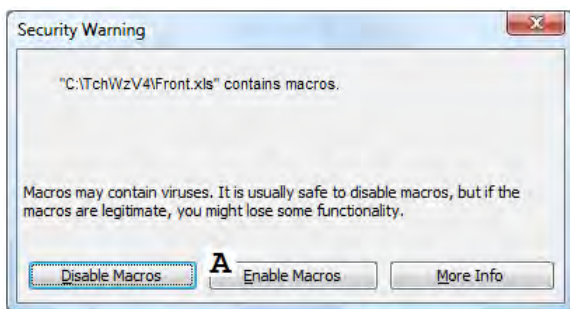
*Note: If the program is already installed from an internet download you can go to the next section, Registering and Starting Production Wizard™.*

1. You must agree to the End User License Agreement to install Production Wizard™.
2. Installing Production Wizard™ - please follow the instructions provided on the web page to install it.

**Notice: When installing Production Wizard™ make sure you do not install the program under the \Program Files\ folder.**

### Registering and Starting Production Wizard™

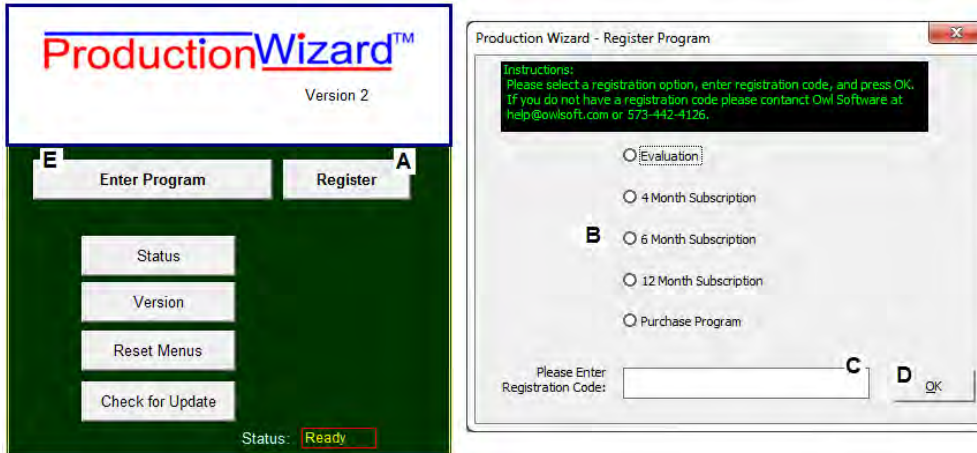
1. Check Excel Security Settings:
  - a. Start Microsoft® Excel. **Production Wizard™ should not be open.**
  - b. Click the **Tools** menu at the top, select **Macro**, and click **Security**.
  - c. The Security window appears. Make sure the **Security Level** tab is selected. Select the **Medium** option if security is set to High or Very High.
  - d. Click the **Trusted Publishers** tab. Make sure **Trust access to Visual Basic Project** is checked.
  - e. Click **OK** to close the window. Close Microsoft® Excel.
2. Find the Production Wizard™ shortcut and click it to start Production Wizard™.
3. Excel will start then Production Wizard™ is loaded. Click **Enable Macros (A)** when the following message appears. If you click Disable Macros the Production Wizard™ program will not work.



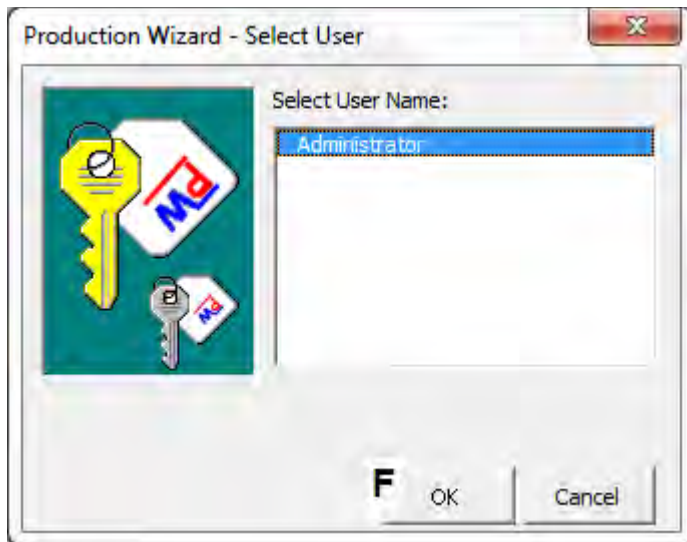
Note - If you are not prompted to enable macros and nothing happens when you click the Register button, make sure you followed the instructions in step 1. If you need help, please contact technical support (call 573-442-4126 9 AM – 5 PM Central time on regular business days or e-mail [help@owlsoft.com](mailto:help@owlsoft.com)).

4. The Production Wizard™ Front Panel will appear (**see figure below**). Press the **Register** button (**A**).

5. The Register Program window appears (see figure below). Select the **registration option (B)**, enter the **registration code** in the space provided (**C**) and press the **OK** button (**D**). If you do not have a registration code, please contact Owl Software (call 573-442-4126 9 AM – 5 PM Central time on regular business days or e-mail [help@owlsoft.com](mailto:help@owlsoft.com)).



6. If you successfully registered Production Wizard™, press the **Enter Program** button (**E in figure above**) to enter Production Wizard™. When the **Select User** window appears, click the **OK** button (**F in figure below**). This will put you in the Formula Development section of Production Wizard™.



Contact Owl Software (call 573-442-4126 9 AM – 5 PM Central time on regular business days or e-mail [help@owlsoft.com](mailto:help@owlsoft.com)) if you have any questions.